

BOM Table						
ITEM NO.	Flow Points	QTY.	PART NO	DESCRIPTION	SEE NOTE	Fuel Type
1		2	120x48x24 Hood	120in Wide x48in Deep x24in High Wall Canopy Hood with 1x(1/6 Duct(1))		
2	2	6	NL2D	Wet Nozzle Dual Flow	2	
3		1	MCH2	Mechanical Control Head		
4		1	M8P2	Mounting Bracket for Control Head		
5		1	RFSM	Remote Mechanical Pull Station	5	
6		5	90K85	Corner Pulley	5	
7		7	349H	Link Housing Bracket	5	
8		7	AR	Fusible Link "ML"		
9	1	3	NL1H	Wet Nozzle Single Flow	2	
10		4	AS	Compression Seal	6	
11		2	AR	Compression Seal	5	
14		1	AR	2in Mechanical Gas Valve	6	
15		1	AR	Strobe Light and Horn		
16	15	2	L4600	4.6 Gallon Cylinder	7	
17		2	MB15	Cylinder Mounting Bracket		
18		1	36Wx1 3/4x1/2 Solenoid	Internal Chamber - 32Wx12D		Gas
19	1	1	NL1L	Wet Nozzle Single Flow	2	
20		5	423572	Swivel Adapter	6	
21		1		Nozzle location to be over front edge of the front burner and centered right to left. Aim at point 10in forward from the back burner and along the right-left center line. Nozzle height 24" to 35" above cooking area. Shelf can overhang burner(s) a maximum of 1 1/2in, and it's height can be a minimum of 20in from cooking surface.	Max. Protection area: 36in wide by 26in deep.	
22		2	AR	38W Convection Oven		Gas
23		1	AS	38W Convection Oven		Gas
24		2	36W 6 Burner Range	Approx. Cooking Area 36Wx26D	8	Gas
25		2		Nozzle location to be over front edge of the front burner and centered right to left. Aim at point 10in forward from the back burner and along the right-left center line. Nozzle height 24" to 35" above cooking area. Shelf can overhang burner(s) a maximum of 1 1/2in, and it's height can be a minimum of 20in from cooking surface.	Max Area of protection = 12x28in	
26		4	423572	Swivel Adapter	6	
27	2	2	NL2S	Wet Nozzle Dual Flow	2	
28		4		Nozzle location to be over front edge of the front burner and centered right to left. Aim at point 10in forward from the back burner and along the right-left center line. Nozzle height 24" to 35" above cooking area. Shelf can overhang burner(s) a maximum of 1 1/2in, and it's height can be a minimum of 20in from cooking surface.	Max Area of protection = 12x28in	
31		1		For NL1H: Mount above any corner of cooking surface aimed at a point 12" in and 12" over from the corner below the nozzle. Mounting Height: 24 to 48in above cooking surface (Green Area)	Approximate Cooking Area 36Wx24D	8 Gas
32		1		36Wx29D Griddle		8
33		1	AS	Appliance Stand		8 Gas
34		1	37Wx26D Charbroiler	Broil Area = 36Wx24D		8 Gas
35		1		Nozzle mounts above any corner of cooking area, to be aimed at center of broiler. Nozzle Height: 36 to 48in above cooking surface. (Green Area)	Large Gas Charbroiler Max. protection area 64in x 2 w/ longest side dimension of 36in.	8
36	2	2	NL2H	Wet Nozzle Dual Flow	2	
37		1	AS	Appliance Stand		8 Gas
38		1	18W Fryer with Drip Board	Approximate Cooking Area 17Wx19D		8 Gas
39		1		Anywhere over Cooking Area. Aim at center of Cooking Area. Nozzle Height 24 to 48in above Cooking Surface.	Max Cooking Area: 500in x 2 Longest Cooking Side: 27.75in, Longest Side of Vent: 18.0in	8
42		1	AR	Prep Table		
43		1		Baffle Plate	Steel or tempered glass baffle plate is installed at a minimum of 8" in height between the fryer and surface flames of adjacent appliance. If of different heights shall be measured from the higher of the two.	

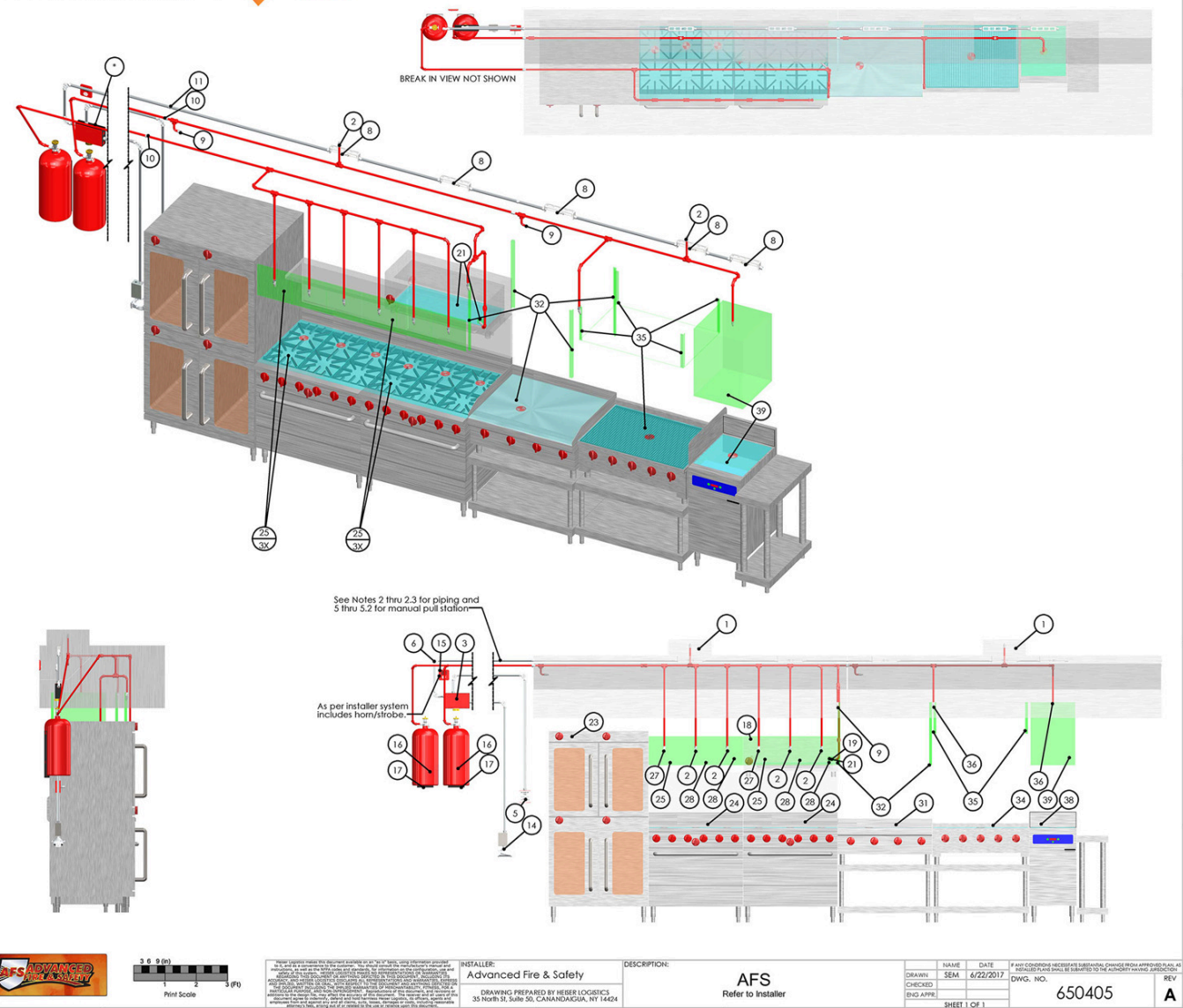
Flow Points Available **6**

- Notes:
- System installation shall conform to requirements of:
 - NFPA 17A (Pre-engineered Wet Chemical Systems)
 - NFPA 94 (Ventilation Control and the Protection of Commercial Cooking Operations)
 - NFPA 72 (National Fire Alarm Code)
 - All applicable state, local codes and authorities having jurisdiction.
 - For more detailed information please refer to the Protex II Technical Manual on the following:
 - Piping allowances please refer to Chapter 3.
 - Nozzle positions, aiming and maximum coverages refer to Chapter 3.
 - Hood and duct coverage maximums and nozzle models refer to Chapter 3.
 - 1" of hood nozzle to be located 0 to 6" from edge of hood. Maximum coverage per nozzle = 10L x 4W.
 - 2.5" Duct nozzle to be centered in duct 0 to 6" into opening and aimed at center of duct.
 - 2.5" Duct nozzles may be modularized to protect oversized ducts.
 - Only equipment referenced in the Protex II Technical Manual or alternate suppliers components that are listed for use with the specific extinguishing system shall be used.
 - System drawing created based on information provided to Heiser Logistics.
 - Pipe routing, manual pull station and gas valve locations are not drawn to as installed specification and are shown for reference only.
 - All handling equipment shall be deemed to be adequate by the authority having jurisdiction.
 - This plan has been produced by a person who is trained and substantially satisfies NFPA 17A, 2009 edition sections 6.1, 6.1.1, 6.2, 6.3, 6.3.1, 6.3.2, 6.3.3, 6.3.4.
 - A class K fire extinguisher shall be provided at a maximum of 30ft from the cooking area in accordance with NFPA 10.
 - 1 - Locate in the path of egress from hazard area.
 - 2 - Mount at height no more than 48" and no less than 42" from the floor.
 - Quantity shown is for reference only and AR = As Required. Individual items may be purchased as packaged kits or are available for purchase separately. Call Heiser Logistics for details 1-800-828-9638.
 - Tank(s) located from hood. Distance supplied by installer.
 - When required to modularize protection for oversized appliances please refer to Protex II Technical Manual Chapter 3.
 - Field verification of the maximum ambient temperature must occur prior to selecting fusible link temperature(s).

Legend	
Color	Description
	Mounting Zones for Nozzles
	Coverage Zone of Nozzle (Max coverage not shown)
	Aiming Area. Aim Nozzle to Center of Target
	Cable Conduit
	Gas for Wet Chemical
	Revision Symbol. Refer to respective Revision for more information. Location of symbol indicates area of change



REVISIONS				
ZONE	REV.	DESCRIPTION	DATE	INITIALS
	A	Released to Customer	6/22/2017	SEM



IF THIS DRAWING ORIGINATED FROM HEISER LOGISTICS IT WILL CONTAIN A RAISED SEAL IN THIS AREA

INSTALLER: Advanced Fire & Safety DRAWING PREPARED BY HEISER LOGISTICS 55 NORTH ST. Suite 20, CANANDAIGUA, NY 14424	DESCRIPTION: AFS Refer to Installer	NAME: SEM DATE: 6/22/2017 DWG. NO.: 650405 SHEET 1 OF 1	IF ANY COORDINATING NECESSARY SUBMITTALS CHANGE BEFORE APPROVAL PLAN, ALL COORDINATING NECESSARY SUBMITTALS BE SUBJECT TO THE AUTHORITY HAVING JURISDICTION.
---	--	--	--